

Mast range

HEB profiles 160 / 180-240 / 260

Material

Bracket Fe hot dip galv

Fittings CuSn

Type Model

1	with hinge
2	with double hinge

Note

Supplied complete with U-bolts.

Associated parts

Cantilever tube 2163

Support tube 2164

Drawing number

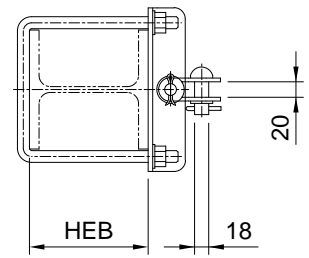
522.00087

Ordering information

with hinge, on HEB 200

2161.1.20 Mast bracket with hinge for fully insulated tubular cantilever

2161.1



2161.2

