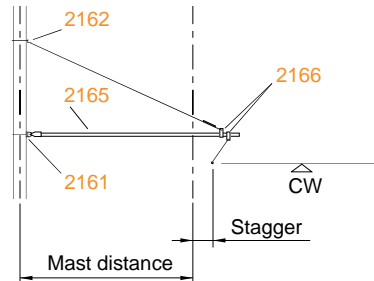
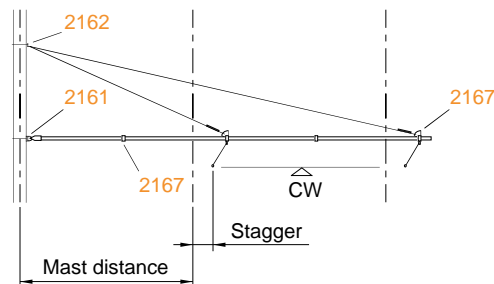


Cantilever on tangent track with stitch-wire suspension



Cantilever on inside of curve with stitch-wire suspension



Basics for cantilever geometry

- Voltage: 1.5 kV 11 kV 15 kV 20 kV _____
 Stagger: ±10 cm ±15 cm ±20 cm ±25 cm ± _____
 Version: Fe stainless

- Systemheight: _____ m (from 1.00 m to 2.20 m)
 V max.: _____ km/h
 Contact wire height: _____ m (above rail)
 Contact wire (CW): _____ mm² Tension CW: _____ kN
 Catenary (Cat): _____ mm² Tension Cat: _____ kN
 Radius min: _____ m
 Superelevation/Cant: _____ mm (Narrow gauge max. 105 mm / Standard gauge 150 mm)
 Mast spacing: _____ m (from 2.50 m to 3.50 m)