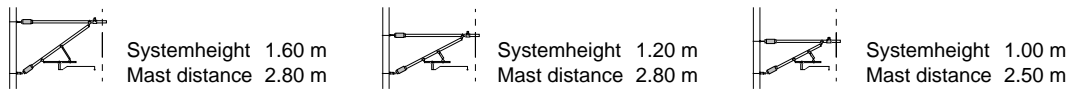
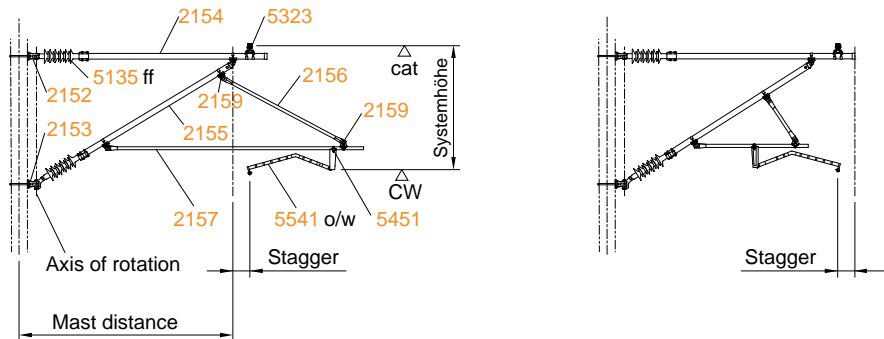
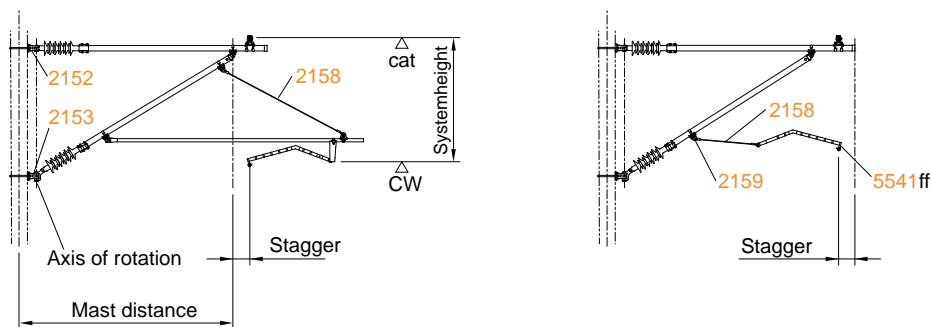


Insulation unprepared
Systemheight 2.20 m, Mast distance 3.50 m



Insulation unprepared with Pull-off rope
Systemheight 2.20 m, Mast distance 3.50 m



Basics for cantilever geometrie

- Voltage: 1.5 kV 11 kV 15 kV 20 kV _____
 Stagger: ±10 cm ±15 cm ±20 cm ±25 cm ± _____
 Version: Fe stainless Material: _____
 Insulation: unprepared prepared

- Systemheight: _____ m (from 1.00 m to 2.20 m)
 V max.: _____ km/h
 Contact wire height: _____ m (over above)
 Contact wire (CW): _____ mm² Tension CW: _____ kN
 Catenary cable (Cat): _____ mm² Tension Cat: _____ kN

- Radius min: _____ m
 Superelevation/Cant: _____ mm (Narrow gauge max. 105 mm / Standard gauge 150 mm)
 Mast spacing: _____ m (from 2.50 m to 3.50 m)