

Material

Fe stainless

Type Insulator**1.1** 5139**1.2** 5135**Note**

Length L min. 2,0 m

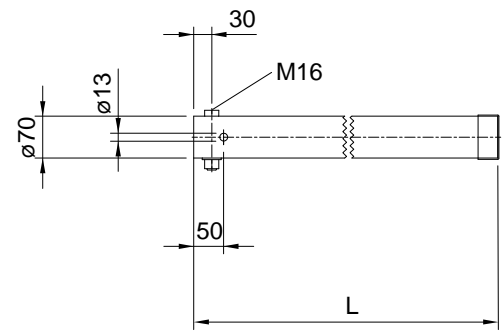
Length L max. 3,5 m

Available in steps of 0,3 m

Other tube lengths available
on request.

x.2 = Supplied without bolt M 16 for insulator

Other material available

**Associated parts**

Bracket with clevis 2159

Rotatable support 5322 onw

Weight

Wt (kg/m) = 4.9

Drawing number

353.00103, .00746

Ordering information

Cantilever top tube Fe stainless,

for insulator 5133, length 2,9 m

2154.1.1.29 Top tube

for tubular cantilever FL 200/260