

**Material**

Insulation Synthetic material

Fittings Fe stainless

Type	Used for
1	with delta cable clamp for cable $\varnothing$ 6 mm
2.1	with pulley for steel cable $\varnothing$ 6 mm
2.2	with pulley for Kevlar rope $\varnothing$ 10 mm
3	with hinged rope clamp
4	with contact wire swivel clip, groove type
5	for steady arm tube
6	with eyebolt for hinged suspension, suspension, delta cable
7	with feeder suspension clamp
8	with hold-down device, spring-loaded and movable

**Note**

on cross span  $\varnothing$  4,5 - 9 mm / 35 - 50 mm<sup>2</sup>

**Associated parts**

Hinged rope clamp 5351

Contact wire swivel clip 5557

Steady arm tube

with eye end fitting 5523

Delta cable 5565 onw

Feeder suspension clamp 5353

Flat laying steady arm 5571

**Resistance**

valid for all types, exclusive type 8

$F1_{Rd}$  (kN) = 1

$F2_{Rd}$  (kN) = 2

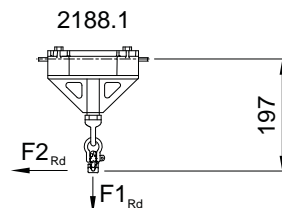
**Drawing number**

353.00353 - .00353-6, 451.00359

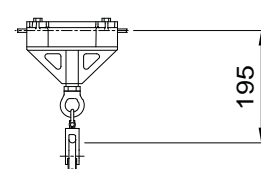
**Ordering information**

with hinged rope clamp

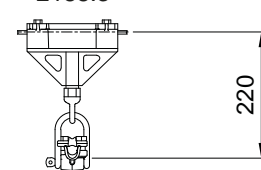
2188.3 Insulated suspension for cross span, short, 1.5 kV



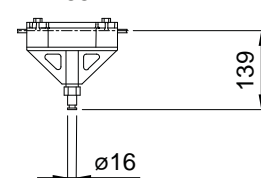
2188.2.1/2188.2.2



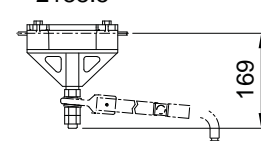
2188.3



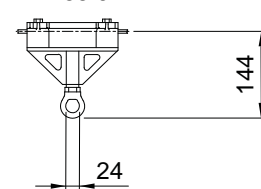
2188.4



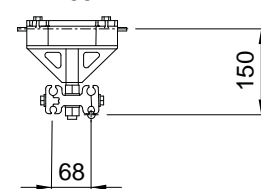
2188.5



2188.6



2188.7



2188.8

