

Fig.1

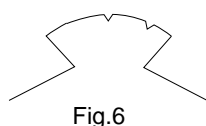
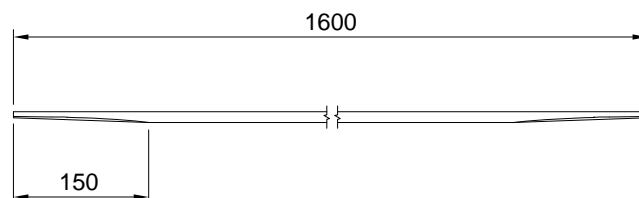
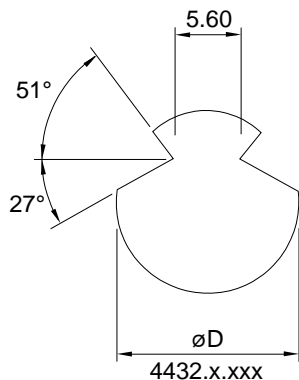


Fig.6



### Material

Fig. 1: Normal strength Copper; Cu-ETP, Cu-FRHC, Cu-HCP, Cu-OF

Fig. 6: Valthermo; CuSn 0.1

Type	Wire (mm <sup>2</sup> )	D (mm)	Wt min. (kg/100m)	Wt max. (kg/100m)	Firmness (N/mm <sup>2</sup> )	F <sub>min</sub> (kN)	Resistivity (Ohm/km)	Resistance at 20° C (10 <sup>-8</sup> Ohm/m)
<b>1.107</b>	107	12.3	92.3	98.0	350	34.40	1.777	0.171
<b>6.107</b>	107	12.3	92.3	98.0	360	37.40	1.777	0.171
<b>6.120</b>	120	13.2	103.5	109.9	360	41.90	1.777	0.153
<b>6.150</b>	150	14.8	129.3	137.4	360	52.40	1.777	0.122

### Note

Normal length 1,60 m

Replacement contact wire for Dilatation 4622  
with prepared ends

### Ordering information

Normal strength copper, 107 mm<sup>2</sup>,

Length 1,60 m

4432.1.1.107 Contact wire, stretched for Conductor rail  
expansion joint