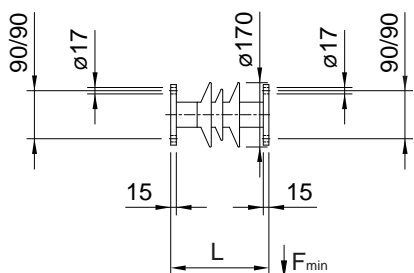
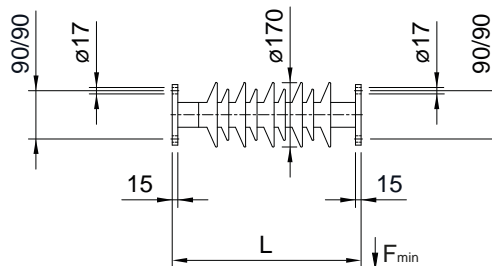


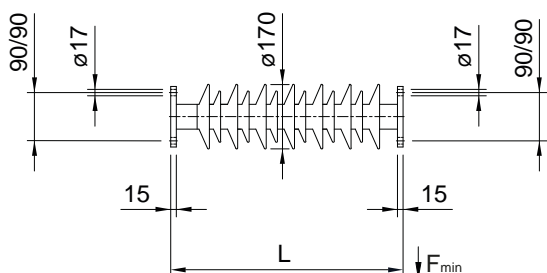
5158.03



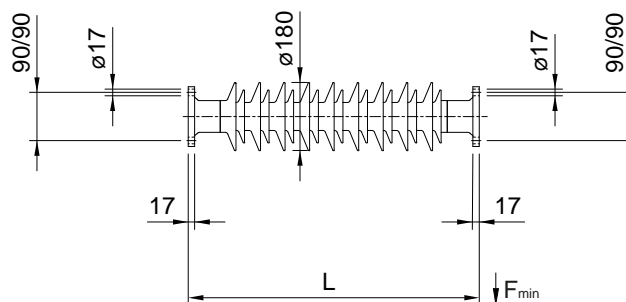
5158.25.1 / 5158.25.3



5158.25.2 / 5158.25.4



5158.25.5

**Matière**

Synthétique

Type	kV	L (mm)	G (kg)	Assiets	F_{min} (kN)	Armatures	dist.de fuite (mm)	Distance de frappe (mm)
03	3	260	7.4	3	35.0	FVZ	370	185
25.1	25	500	9.6	9	15.0	FVZ	1092	419
25.2	25	615	11.1	13	13.5	FVZ	1550	560
25.3	25	500	9.6	9	15.0	A4	1092	419
25.4	25	615	11.1	13	13.5	A4	1550	560
25.5	25	770	15.8	18	14.3	FVZ	2000	645

Force de traction $F_{T\ min}$ (kN) = 100**N° dessin**

424.00054, .00151, .00176, .00197, .00198, .00224

Exemple de commande

25 kV

5158.25.1 Isolateur composite avec raccord à brides