

Material

Insulation Synthetic material

Fittings Fe stainless

Type Used for

Type	Used for
1	with delta cable clamp for cable \varnothing 6 mm
2.1	with pulley for steel cable \varnothing 6 mm
2.2	with pulley for Kevlar rope \varnothing 10 mm
3	with hinged rope clamp
4	with contact wire swivel clip, groove type
5	for steady arm tube
6	with eyebolt for hinged suspension, suspension, delta cable
7	with feeder suspension clamp
8	with hold-down device, spring-loaded and movable

Note

 on cross span \varnothing 4,5 - 9 mm / 35 - 50 mm²
Associated parts

Hinged rope clamp 5351

Contact wire swivel clip 5557

Steady arm tube

with eye end fitting 5523

Delta cable 5565 o/w

Feeder suspension clamp 5353

Flat laying steady arm 5571

Resistance

valid for all types, exclusive type 8

 F_{1Rd} (kN) = 1

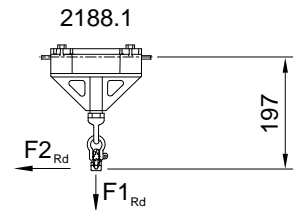
 F_{2Rd} (kN) = 2

Drawing number

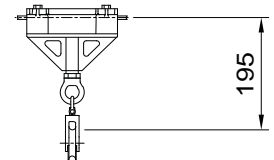
353.00353 - .00353-6, 451.00359

Ordering information

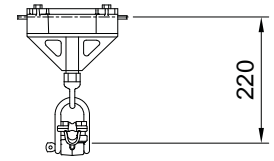
with hinged rope clamp

 2188.3 Insulated suspension for cross span,
short, 3 kV


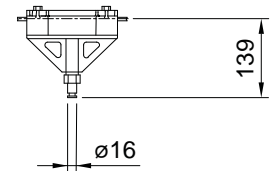
2188.2.1/2188.2.2



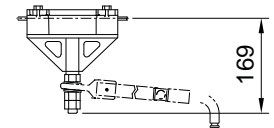
2188.3



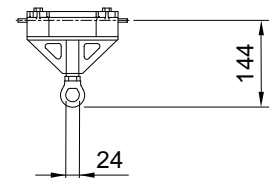
2188.4



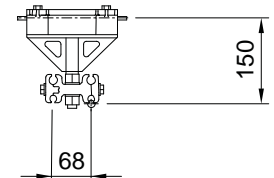
2188.5



2188.6



2188.7



2188.8

