

**Material**

Al

**Note**

L = 11,9 m

Other lengths available on request.

Cross-section of the rigid bar:

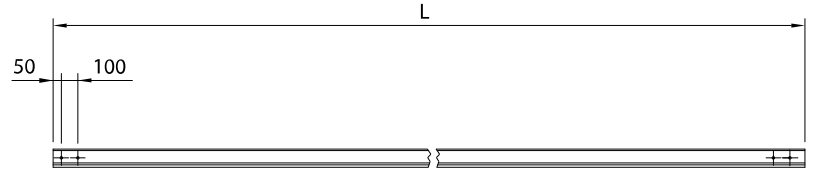
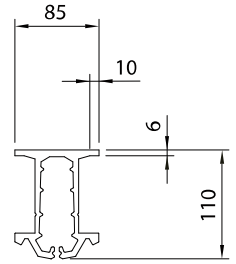
1343 mm<sup>2</sup> copper equivalent.

For radii less than 100 m the rigid bar must be mechanically pre-formed.

Greasing sleeve 4632

Protective grease 4633

Protected by patent

**Associated parts**

Conductor rail support 2613 o/w

Feeder clamp 3441

Section insulator 4261 o/w

Interlocking joint (pair) 4612 o/w

Conductor rail expansion joint 4622

Clip for earthing rod 6222 o/w

Protecting plastic 4614

**Weight**

Wt (kg/m) = 6,17

**Drawing number**

963.01535, .01536

**Ordering information**

4611 Overhead conductor rail CR4