

Material

Insulation Synthetic material

Fittings Fe stainless

Type	Used for
1	with delta cable clamp for cable \varnothing 6 mm
2.1	with pulley for steel cable \varnothing 6 mm
2.2	with pulley for Kevlar rope \varnothing 10 mm
3	with hinged rope clamp
4	with contact wire swivel clip, groove type
5	for steady arm tube
6	with eyebolt for suspension, delta cable
7	with feeder suspension clamp

Noteon cross span \varnothing 4,5 - 9 mm / 35 - 50 mm²**Associated parts**

Hinged rope clamp 5351

Contact wire swivel clip 5557

Steady arm tube

with eye end fitting 5523

Delta cable 5565 o/w

Feeder suspension damp 5353

Resistance

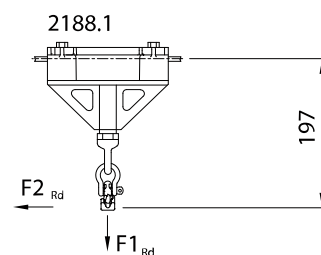
valid for all types

 $F1_{Rd}$ (kN) = 1 $F2_{Rd}$ (kN) = 2**Drawing number**

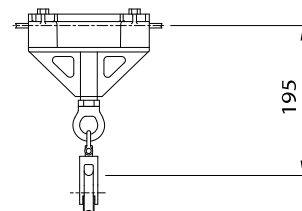
353.00353 - .00353-6, 451.00359

Ordering information

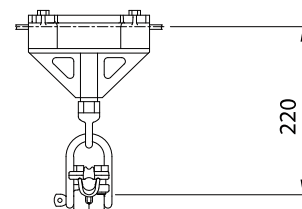
with hinged rope clamp

2188.3 Insulated suspension for cross span,
short, 3 kV

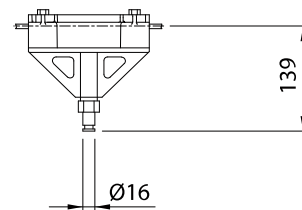
2188.2.1/2188.2.2



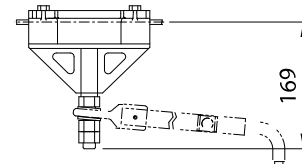
2188.3



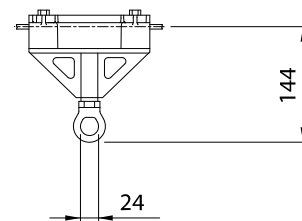
2188.4



2188.5



2188.6



2188.7

