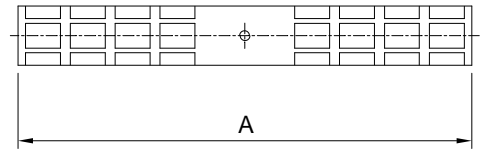


Material

Bz

| Type | Rope (mm ²) | A (mm ²) |
|------|----------------------------|-------------------------|
| 050 | Staku 50 | 110 |
| 095 | Cu 95 / Staku 92 | 210 |
| 150 | Cu 150 | 182 |

**Ordering information**

3556.050 Crimp connector for ropes Cu/ Copper-covered steel tensile strength