

Material

Synthetic

Type	kV	L (mm)	Wt (kg)	Sheds	F_{min} (kN)	Fittings	creep dist. (mm)
03	3	260	7.4	3	35.0	FVZ	370
25.1	25	500	9.6	9	15.0	FVZ	1092
25.2	25	615	11.1	13	13.5	FVZ	1550
25.3	25	500	9.6	9	15.0	A4	1092
25.4	25	615	11.1	13	13.5	A4	1550

Note M_{min} at base (Nm) = 7500**Tensile force** F_{min} (kN) = 100**Drawing number**

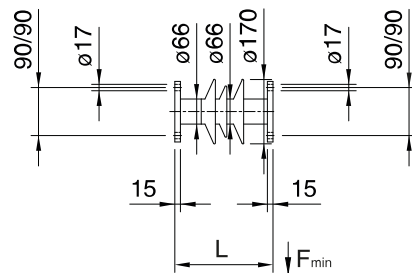
424.00054, .00151, .00176, .00197, .00198

Ordering information

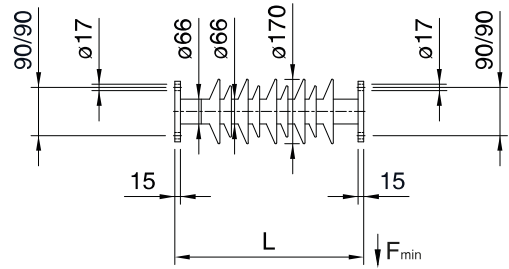
25 kV

5158.25.1 Composite insulator with flanged joints

5158.03



5158.25.1 / 5158.25.3



5158.25.2 / 5158.25.4

